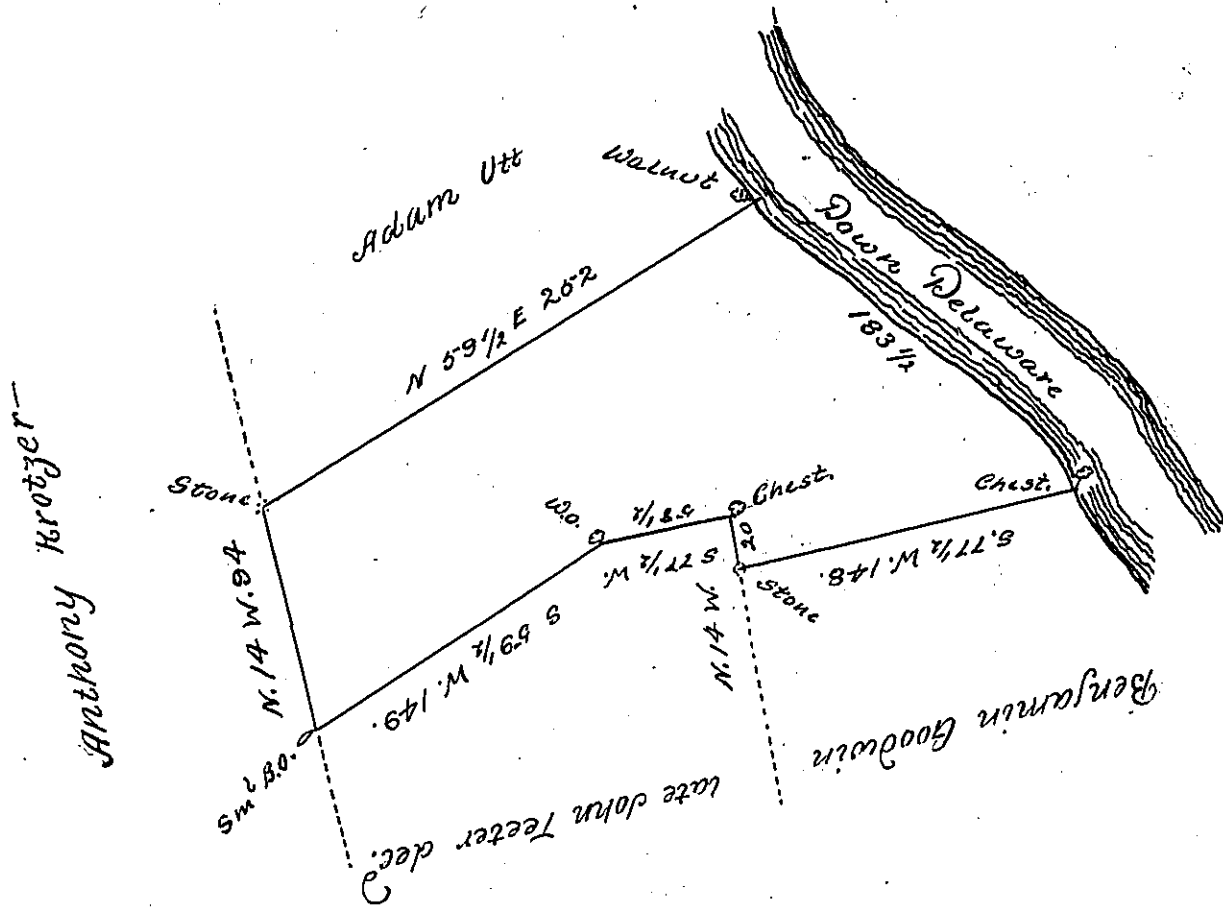


Bearing & distance  
down Delaware  
1. S. 50. E. 146  
2. S. 49 1/2 E 37 1/2  
183 1/2



By virtue of a warrant dated the 13 June 1797 surveyed the 29<sup>th</sup> December 1797 to Christopher Bowman the above described tract of land situate on Delaware River in upper Mount Bethel Township Northampton County containing one hundred and ninety four acres sixty perches and the allowance of six P Gert.

N.B

P Geo Palmer

The above tract is included and is part of 750 Acres of land commonly called Theophilus Partridges tract

Geo Palmer

To Daniel Brodhead Esq<sup>r</sup> S.G.

IN TESTIMONY that the above is a copy of the original remaining on file in the Department of Internal Affairs of Pennsylvania, made conformably to an Act of Assembly approved the 16th day of February, 1833, I have hereunto set my Hand and caused the Seal of said Department to be affixed at Harrisburg, this Twenty Third day of November 1903

*Joac P. Brown*  
Secretary of Internal Affairs.